



Lockyer Uplands Catchments Inc

...caring for native habitats

President's Report 1st November 2024 - 31st October 2025

10th Annual General Meeting

Sunday 7th December, 2025

info@lockyeruplandscatchmentsinc.org.au

www.lockyeruplandscatchmentsinc.org.au

Yuggera - Ugarapul country

AGM/GM Agendas

- 10:30am Annual General Meeting
- President's and Treasurer's Reports
 - Election of Office Bearers

- 11:00am General Meeting
- Ongoing projects
 - Other business

- 11:30am Guest speaker Felicity Charles, UQ researcher
- "How does fire influence food resources for the notoriously picky Glossy Black Cockatoo"*

- 12:00pm Christmas Party



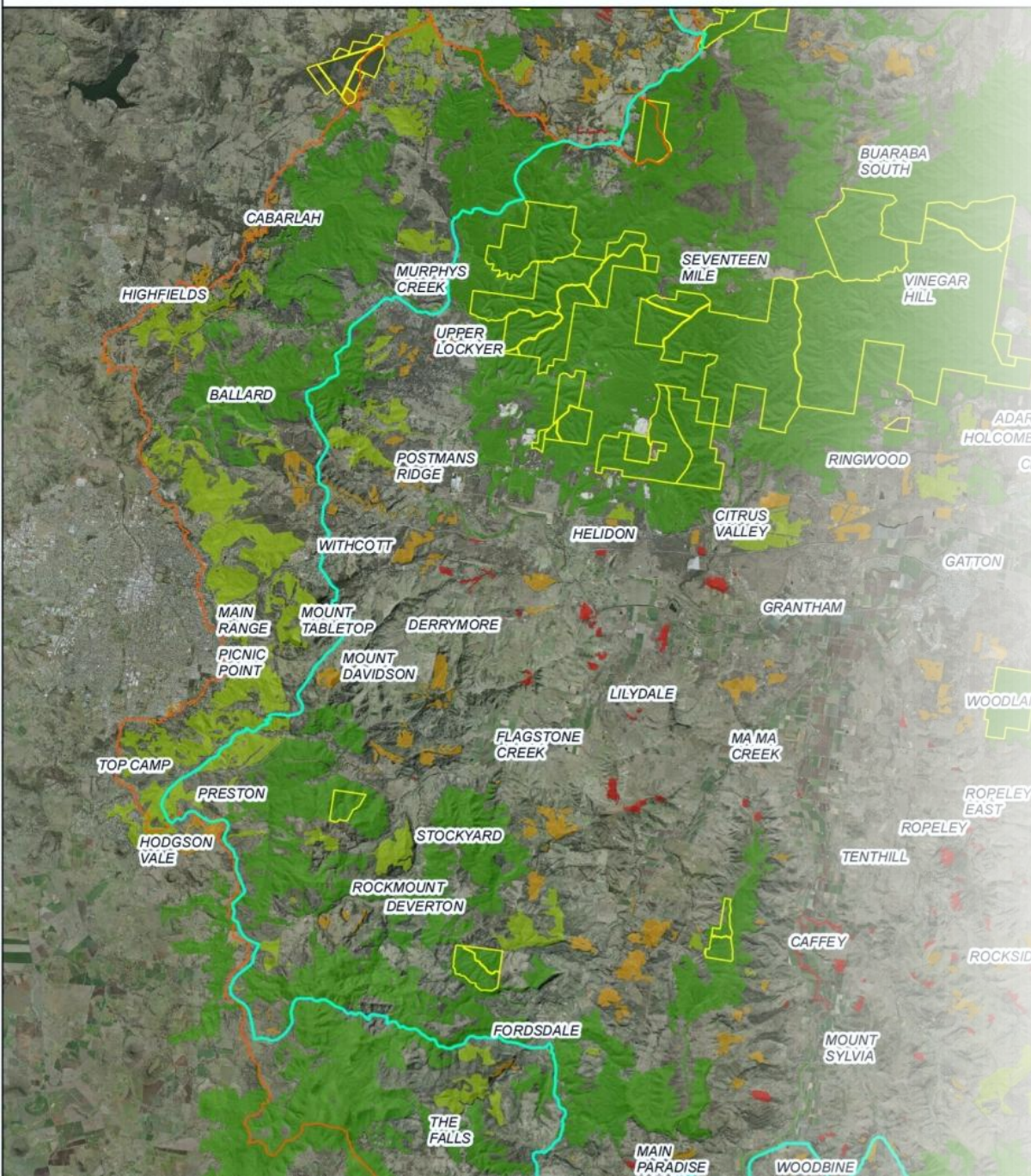


Lockyer Uplands Catchments Inc

...caring for native habitats

by engaging people to restore, expand and connect native habitat

- *locally (Main Range to Helidon Hills)*
- *as part of a regional corridor initiative - Bunyas to Border*
- *contributing to a national conservation effort - Great Eastern Ranges initiative*



LUCI – good governance a priority

- Incorporated and insured (facilitated by QWALC)
- Constitution (OFT's Model Rules) and a suite of protocols
- Managed by committee - 3 Elected, 3 member representatives and an ex-officio member
 - 6 meetings in 2025



LUCI connections

- 83 financial members in 2025 (learn, connect, act, support)
- Registered Landcare group and regional partner in the Great Eastern Ranges Initiative
- Membership of QWALC, SEQCMA, GBC Conservancy, Protect The Bush Alliance, Friends of Parks Association Queensland and Queensland Threatened Plant Network

Community education

WORKSHOPS

- **Fungi Foray Walk and Talk with Dr Mo Boddington**
- **Glossy Black Cockatoo Nest Site workshop with Mike Barth**
- **Tools for Fauna Monitoring with Joe Joseph and Roxane Blackley**

WALKS

- **Summer Walk at Townson property**
- **Winter Walk at Dwyers Scrub Conservation Park**

MATERIALS

- **Published Martin Bennett's booklet**
- **Continue to sell Grasses booklet**



Fauna monitoring

Contributed 102 records to WildNet database including 66 koala sightings, 11 of which were, sadly, road deaths.

BIRDS OF THE LOCKYER UPLANDS CAP

- Continue to monitor bird diversity through an agreement with the Lockyer-Toowoomba Birds on Farms Project.
- Nocturnal Bird Survey project by Joe Joseph (32 surveys on 8 properties). Species monitored included Powerful owl, Barn owl, Australian owlet nightjar, Southern boobook, Whitethroated nightjar and Tawny frogmouth.
- Birds-insects relationship – Rhiannon Bird's research.



Volunteer weed management



Friends of Dwyers
Scrub group
contributing
thousands of
hours of
volunteer effort
since 2015.

2026 activities

- Glossy Black Nest Box project
- Tree planting
 - Schools Wildlife Corridors Project
 - Private properties

Bunyas to Border Project – year 3

- Pilot – first in series of Koala Climate Corridors project initiated by IFAW and GER
- 8 target species
- LUCI regional delivery partner with two p/t coordinators, a community reference group and collaboration with five community groups
- **Achievements 2023-2025**
 - Over 5,000 trees planted
 - Greater Glider Nest Box project
 - Distributed 41 arboreal water stations
 - Four community workshops
 - B2B Forum in June 2025 featuring international guest speakers
 - Funding and support partners (e.g. LVRC, WIRES, Greening Australia, Mary MacKillop, BirdLife) and private donors
 - Individual experts and landholders

Photo J Blatchly 2024

Collared delma project 2024-2025



- Australian Government “Saving Native Species” program
- Partnership with Kholo Creek Catchment and Pullen Pullen Catchment Groups
- LUCI delivery partner – project manager and officer, project team and contractors
- 37 survey sites and 15 habitat research sites - 11 records (3 for the Lockyer)
- 24 habitat treatment sites
- 3 field days and a landholder publication to inform conservation efforts



Photo Stephen Peck

LUC SUBMISSIONS

- Koala Roadkill Mitigation to Minister TMR, local State member and LVRC
- Additional comments on Motor Testing Facility Helidon Hills to LVRC
- LUCI premises request to LVRC
- Land Tax Exemption for Nature Refuges Submission to Qld Treasurer
- Several letters to LVRC on Agistment on Ma Ma Creek Riparian Reserve

Member benefits

- Walks and workshops
- Access to grant opportunities
- Participation in citizen science projects
- Wildlife surveys on property (cameras, bioacoustic recorders)
- Loan of weed control equipment (Spray packs)
- Quarterly newsletter
- Library
- Social/Christmas get togethers

LUCI wholeheartedly thanks...

- Management committee and LUCI members
- LVRC's Martin Bennett and Chris Hoffmann and UQ's Joe Joseph
- Funders and supporters
 - Private donors and in-kind contributors
 - Partners (Great Eastern Ranges and IFAW)
 - Department of Climate Change, Energy, the Environment and Water
 - Grantors (DCCEEW, DETSI, LVRC, TRC, BirdLife, Mary Mackillop)

Together we improve and enhance native habitats so that other species can survive and thrive