



Lockyer Uplands Catchments Inc

... caring for native habitats

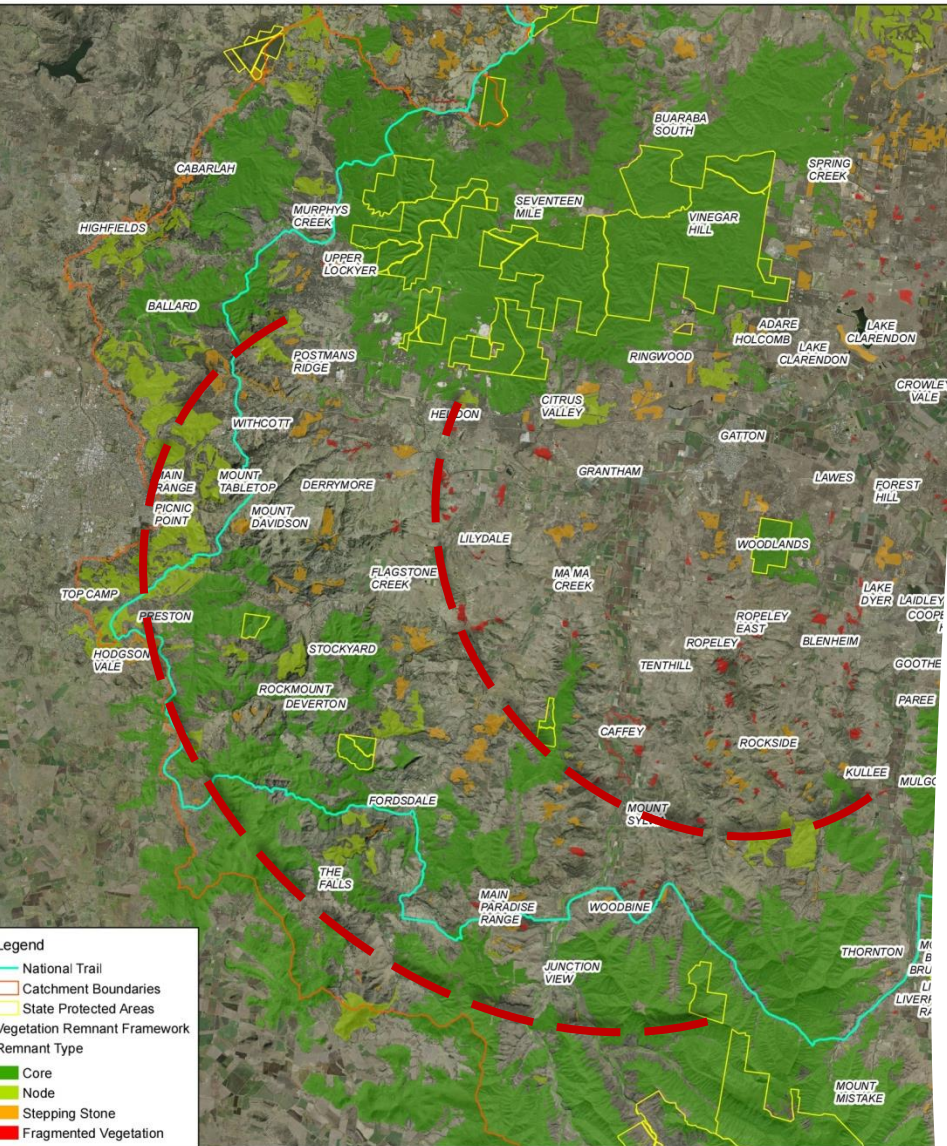
Yuggera-Ugarapul country

*info@lockyeruplandscatchmentsinc.org.au
www.lockyeruplandscatchmentsinc.org.au*

President's Report 1st November 2022- 31st October 2023

8th Annual General Meeting

Sunday 10th December, 2023



Legend
 National Trail
 Catchment Boundaries
 State Protected Areas
 Vegetation Remnant Framework
 Remnant Type
 Core
 Node
 Stepping Stone
 Fragmented Vegetation

0 5 10
 Kilometers
 1:175,000 printed A3
 GDA 1994 Zone 56
 Data Sources: Queensland Government,
 Healthy Land and Water
 Aerial Photography 2015



This information or data is provided by Healthy Land and Water on a general basis only. You should seek specific or appropriate advice in relation to this information or data before taking any action based on its contents. So far as permitted by law, Healthy Land and Water Limited makes no warranty in relation to this information or data.

This map is not to be sold or re-made as part of a commercial product
 Cartographer: S. Mooney, M. Walker
 Version: 14 July 2017
 Copyright: Healthy Land and Water (HLW) 2017.

LUCI's Vision...

- Improve **native habitat connectivity** across private and public tenures in our local landscape as part of the Main Range-Helidon Hills Biodiversity Corridor and as part of the Great Eastern Ranges.

Aims...

- Raise awareness of natural systems
- Encourage better land management options
- Improve environmental outcomes

LUCI – good governance a priority

- Incorporated 2016
 - Funds through membership fees (76 in 2022-23), donations, grants and sales
 - WH&S policy and protocols and public liability insurance \$30m in place
 - Privacy and data management protocols in place
-
- Regional partnership with Great Eastern Ranges and member or associate with QWALC, SEQCMA, Landcare Australia, GBC Conservancy, PTBA and Friends of Parks Association Queensland.
-
- Management committee 3 elected members and 7 ordinary members met six times in 2022-23



Birds of the Lockyer Uplands Conservation Action Plan (BLUCAP)

BLUCAP posted on LUCI's website aims - Understand, improve and advocate

Steering Committee

- 7 partners - 3 meetings

Bird Survey Project

- Lead surveyor Roger Jaensch – 21 properties
- 152 species, registered with Birdata and WildNet

BirdLife Australia grant

- Extend the survey effort into LLR

Bunyas to Border –Koala Climate Corridors Project

Pilot project supported by GER and IFAW

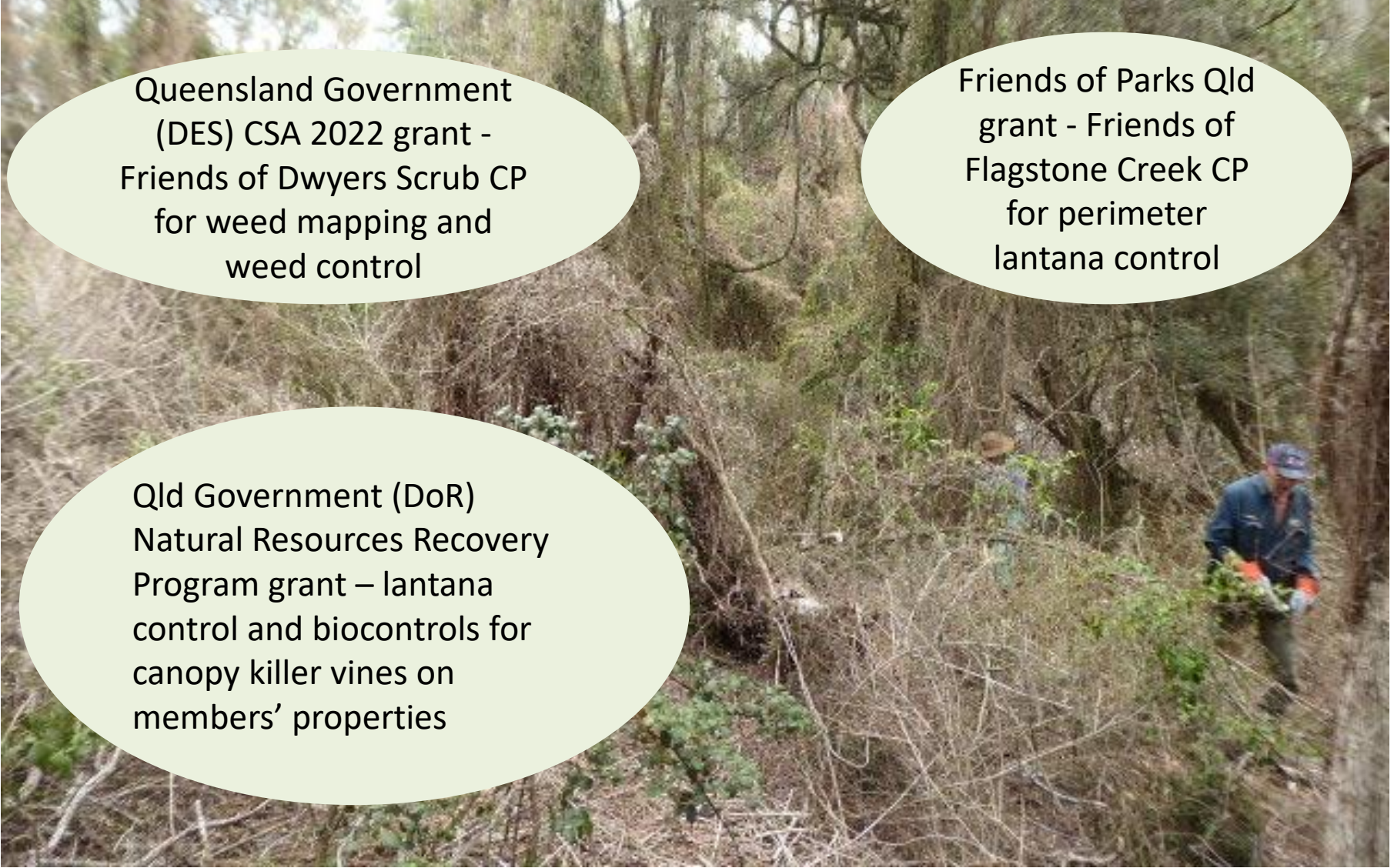
Sustainable collaborations

Bunyas to Border habitat improvement for umbrella and target species

12month plan involving several collaborators in tree planting, provision of supplementary habitat, surveys, workshops and field days.

Photo Jens Sohnrey

Better land management - grants for weed control work



Queensland Government
(DES) CSA 2022 grant -
Friends of Dwyers Scrub CP
for weed mapping and
weed control

Friends of Parks Qld
grant - Friends of
Flagstone Creek CP
for perimeter
lantana control

Qld Government (DoR)
Natural Resources Recovery
Program grant – lantana
control and biocontrols for
canopy killer vines on
members' properties

Fauna monitoring – locally and regionally

Expert and landholder observations registered by LUCI with WildNet

- 89 koala sightings
- 297 other species...
 - 4 Glossy Black Cockatoos
 - 7 Brush-tailed Rock Wallaby
 - 3 Powerful Owl
 - 1 Platypus
- 153 native flora species including 11 threatened/MLES



Building knowledge

Special Interest Walks

- 3 walks – approximately 80 attendees learned about understorey management, natural regeneration, different vegetation communities and flora identification.



Workshops

- Frog mini-blitz; Native Plant Propagation; Understorey Foodwebs



Events, collaborations, representations and submissions

- LUCI participation in UQ Gatton 3rd year wildlife technology subject
- National Threatened Species Day information stall
- Guide for Toowoomba Field Naturalists visit to Dwyers Scrub CP
- LUCI represented on LVRC's 7 Mile Lagoon Steering Committee
- Presentation at DES' Lockyer Valley Koala forum
- BirdLife Australia's Powerful Owl Project
- HOPE (Twba) Nest boxes project
- LUCI submissions
 - LVRC Draft Planning Scheme
 - Helidon Hills rocket engine testing facility development application

Member benefits

- Walks and workshops
- Access to grants
- Wildlife surveys
- Loan of fauna monitoring equipment (cameras, bioacoustic recorders)
- Loan of weed control equipment (Splatter gun, tree spear)
- Quarterly newsletter
- Library
- Christmas get together

Opportunities for 2024

- Grant collaborations
- Invertebrates Australia
- BirdLife Australia
- Student project on fauna monitoring

LUCI wholeheartedly thanks...

- Our members and friends
- Roger Jaensch (Jaensch Ornithology & Conservation), Martin Bennett and Chris Hoffmann
- Partners and supporters
 - Great Eastern Ranges
 - International Fund for Animal Welfare
 - Department Environment and Science
 - Lockyer Valley Regional Council
 - Healthy Land and Water
 - BirdLife Australia and BirdLife SQ Darling Downs Branch
 - Toowoomba Bird Observers
 - University researchers (Dr Guy Castley GU and Dr Annabelle Smith and Dr April Reside UQ)
- Private donors

Together we improve and enhance native habitats so that other species can survive and thrive